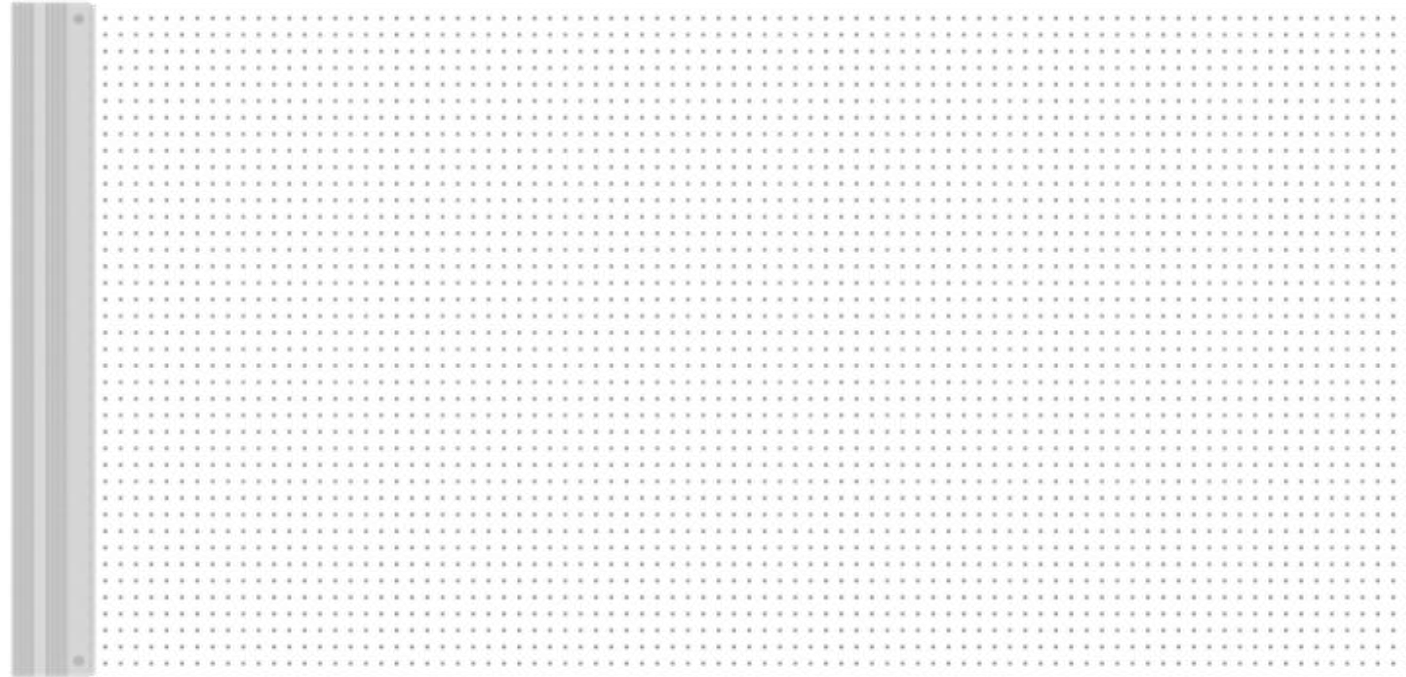


# T3 Series

Innovative LED Transparent Film Screen On Glass



Light and Slim



Good Heat Dissipation



Arbitrary cutting



High Brightness



High Transparency



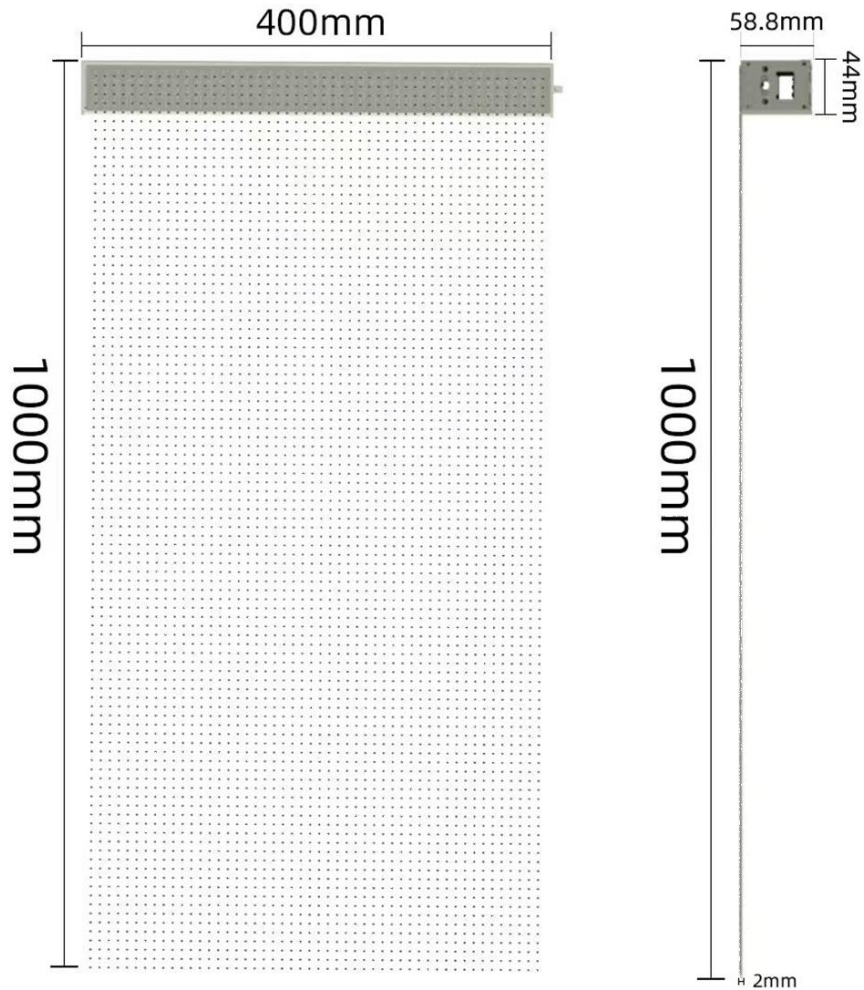
Economical and Eco-friendly



Fast and Easy Installation



Various Application



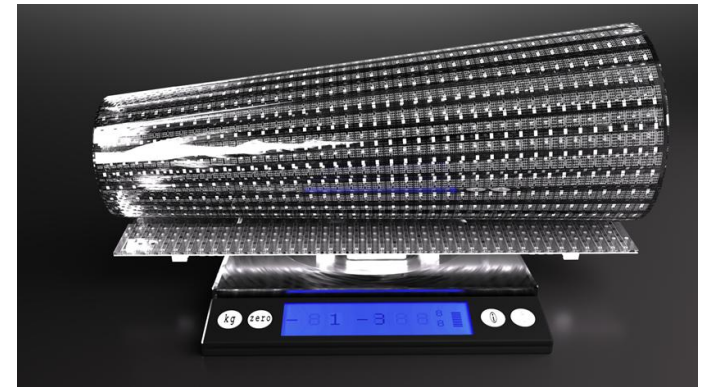
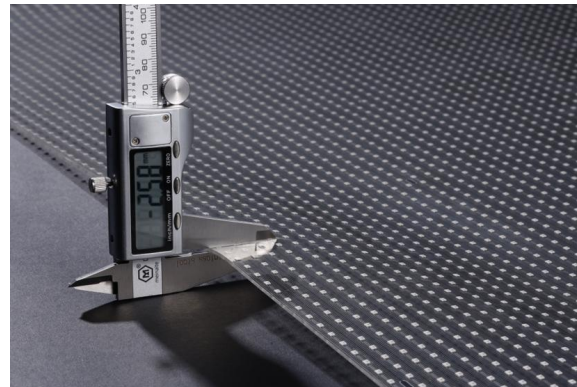
## Light-Weighted and Thin

Single module size: 1000mm\*400mm

Thickness: 58.8mm, save space

Light weight: 1.3kg/panel

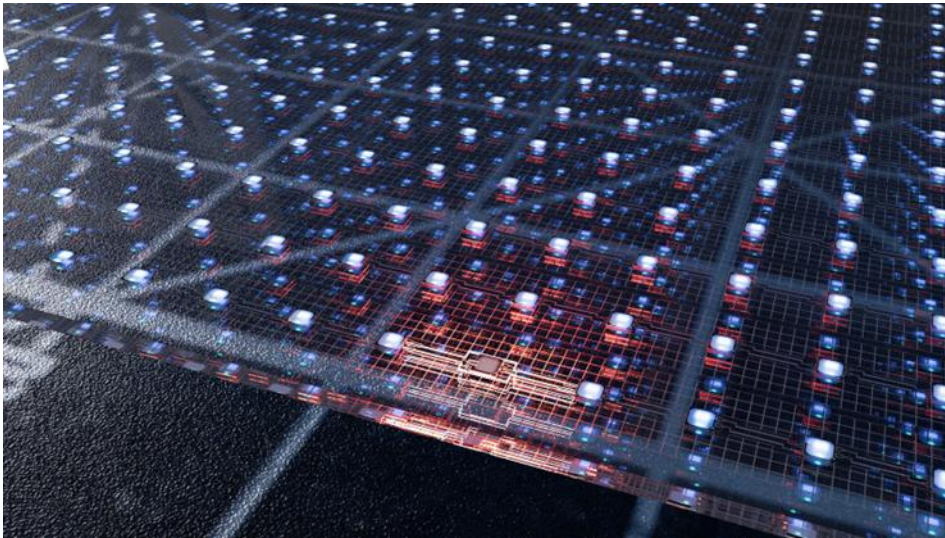
The substrate for these displays is usually a flexible polymer material, like polyimide or transparent conductive polyester film. The LEDs are mounted on this substrate using techniques that make them durable against bending and flexing.



## Mini LED

Model:SMD1313/1515/2222

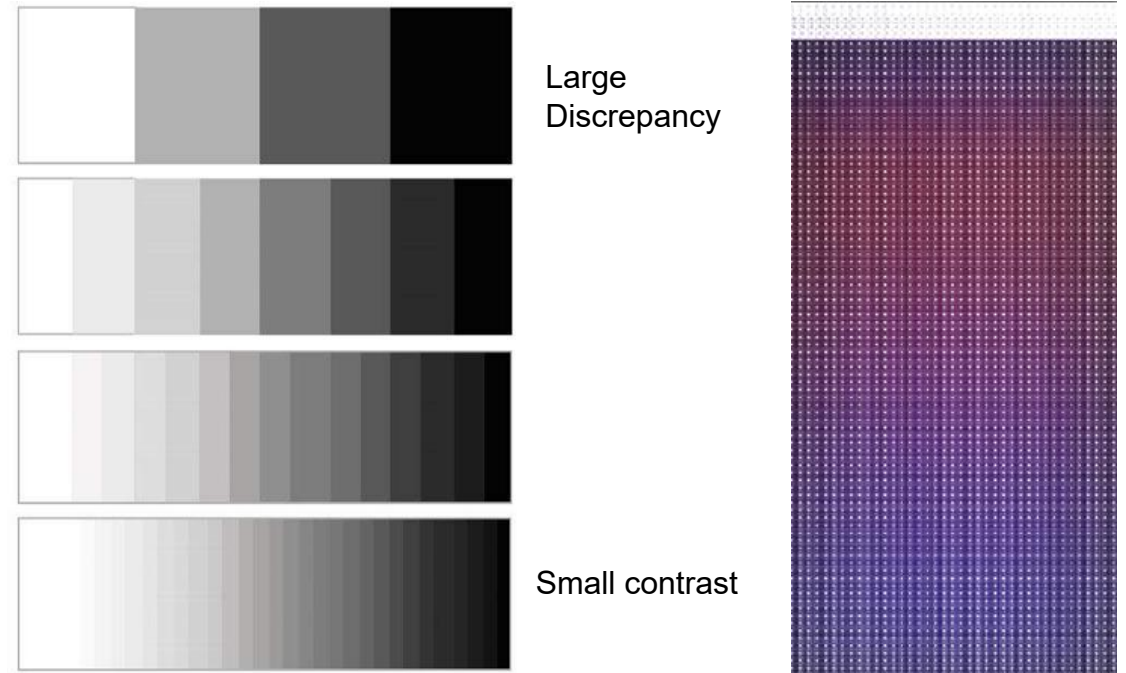
### 1. Breakpoint continuation



The combination of light and drive, independent research and development, high reliability, industry leading

### 2. High gray scale display (true 16bit)

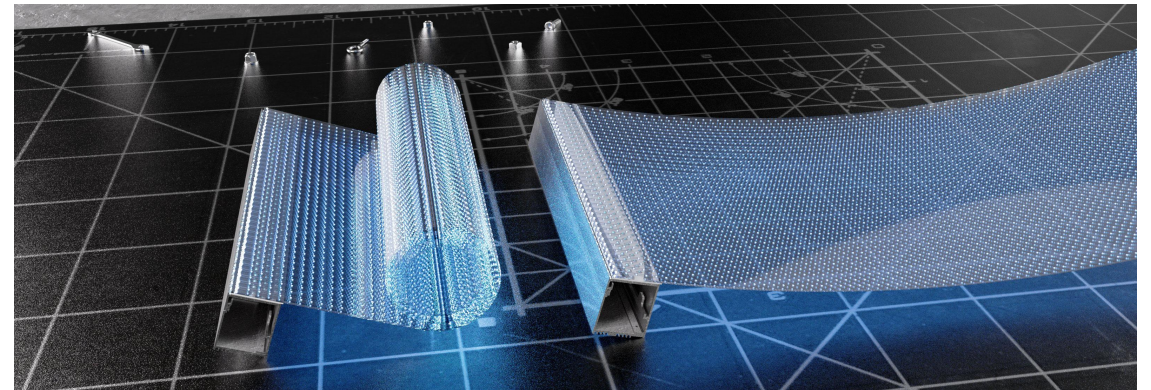
RGB channel adopts 32-level current linear regulation, and maintains true 16-bit grayscale display under any current, which is applicable to the consistency of indoor, semi-outdoor and outdoor current requirements.



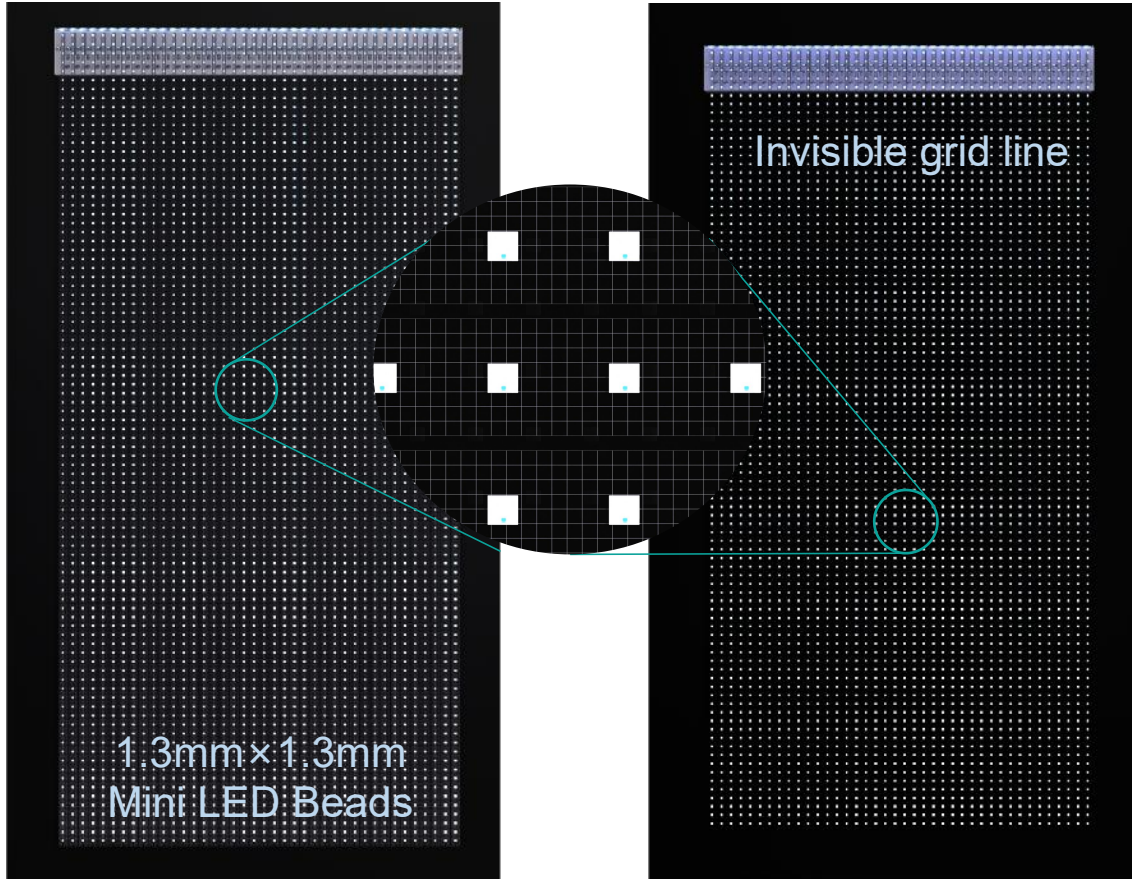


## Flexibility

- Applies to any surface
- Soft flexible screen technology, can be suitable for curved, curved, cylindrical shaped scene applications
- Surface case



- Real shot of module curled into a circle



Use the integrated MiniLED lamp beads to improve its own permeability

Use invisible grid circuit to improve its permeability

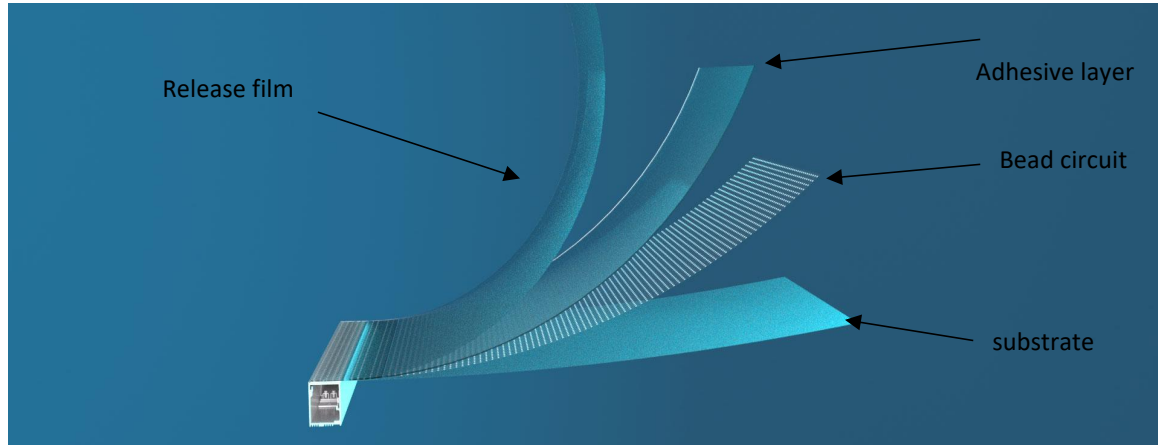
## High transmittance

The implementation of integrated MiniLED lamp beads and an invisible grid circuit enhances its permeability.

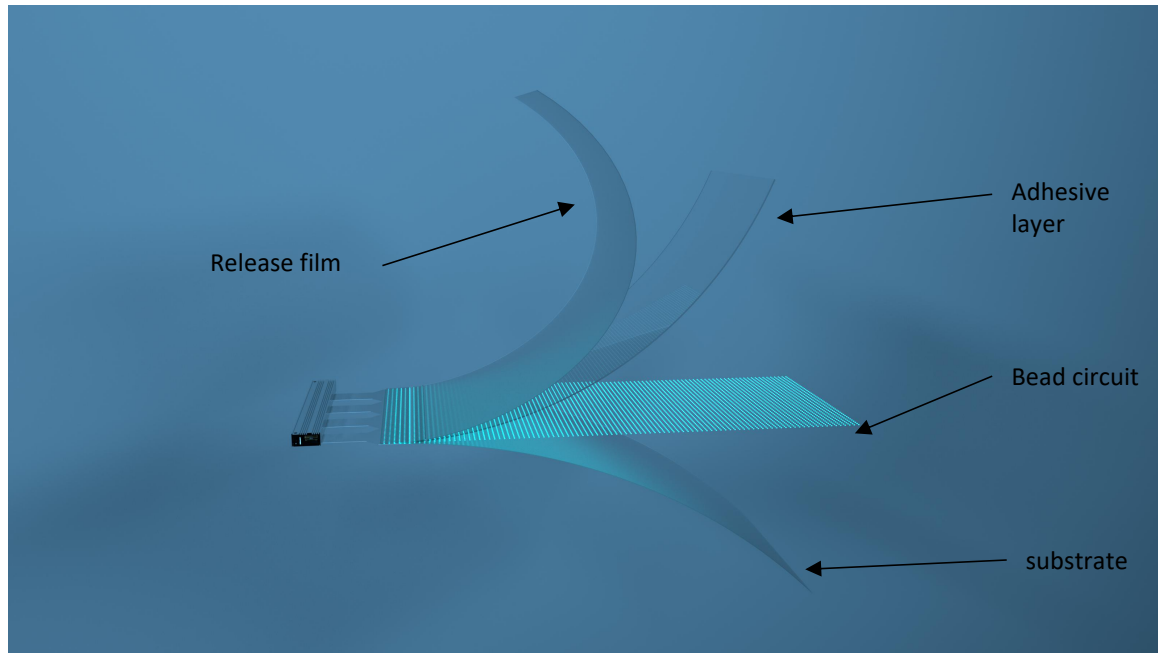
The transmittance exceeds 90%, allowing ample daylight through the glass without significantly impacting visibility.

Model	P6	P8	P10	P15	P20
Permeability	90%	92%	94%	94%	95%

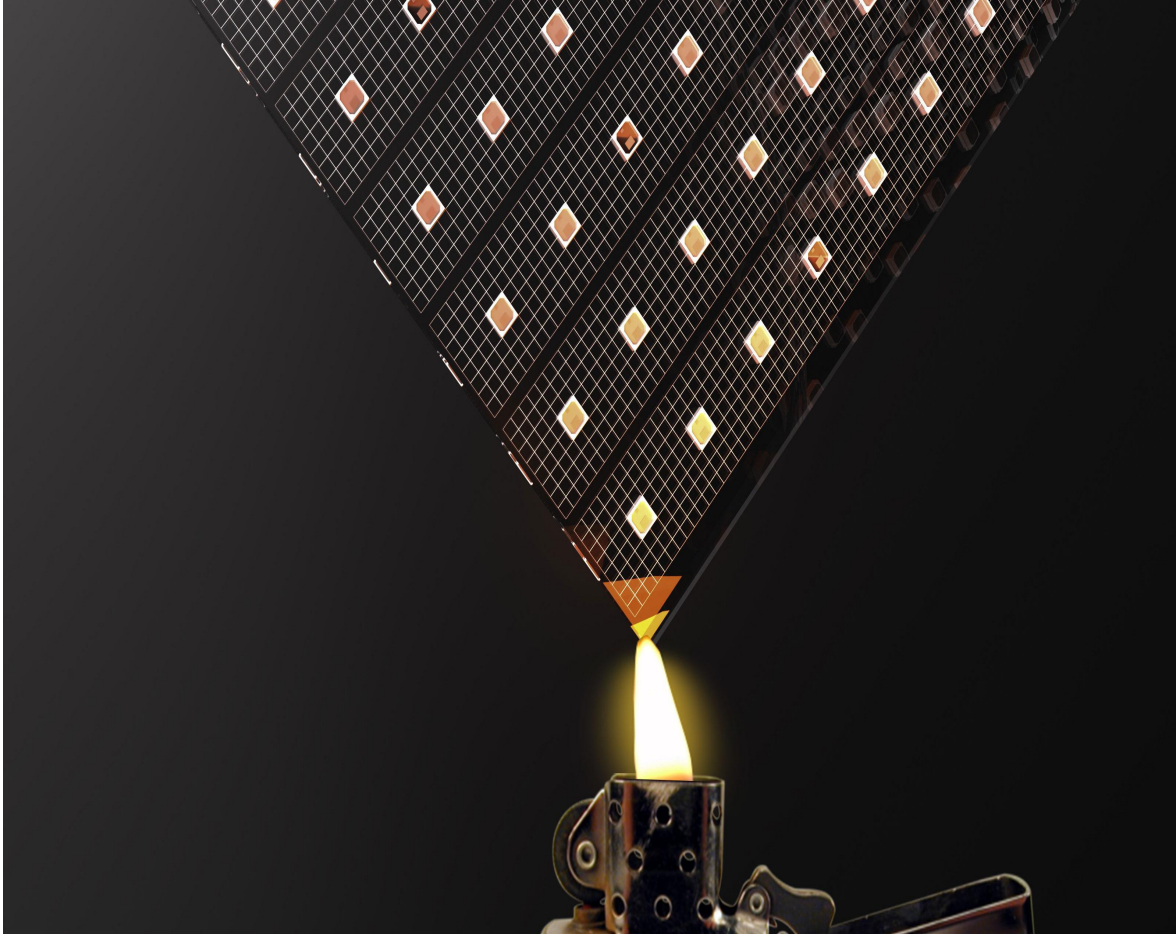
## Exploded view of module (with power box)



- Hard connection



- Soft row cable connection

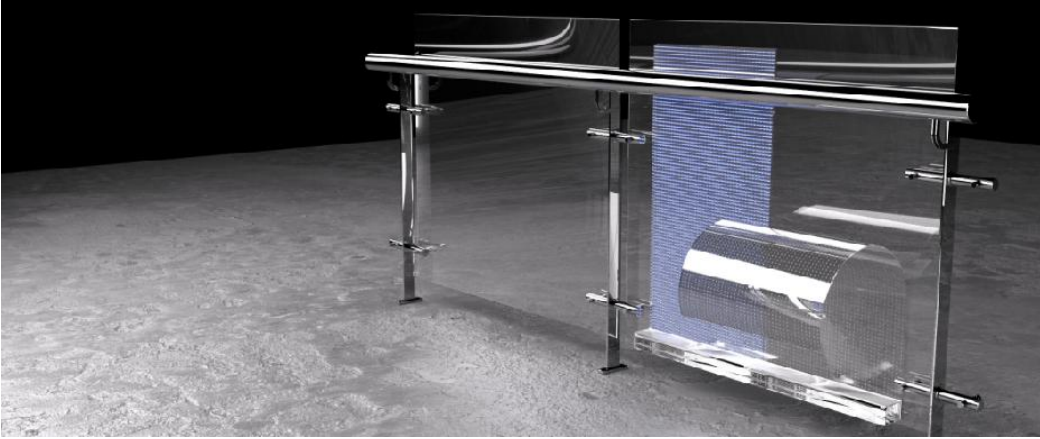


## Flame retardant

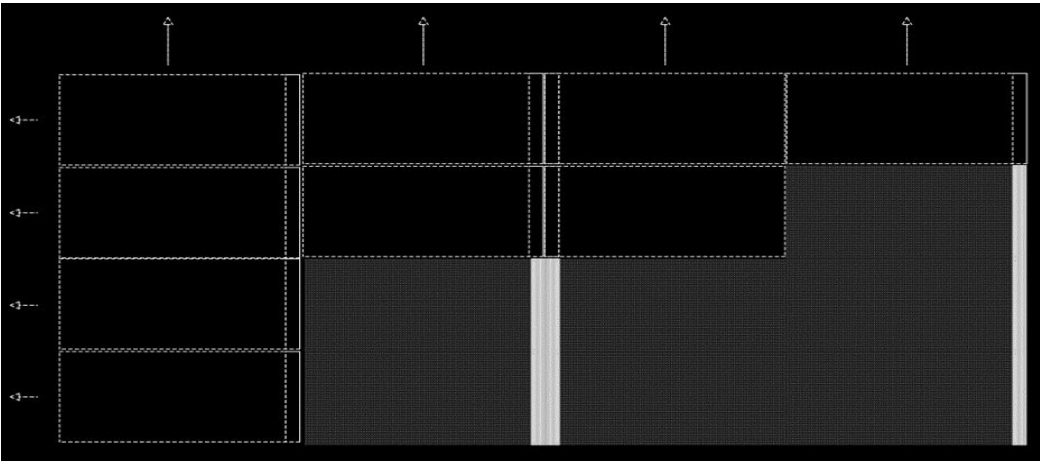
- Grade V1 flame retardant
- UV resistance without yellowing >8 years

## Easy and Fast Installation

No steel structure is required, just stick the thin screen slightly and connect the power signal



Innovative glue-filling process allows for the direct attachment of the screen body to the glass surface. Through strong colloid adsorption, the screen body is able to adhere firmly to the glass. Furthermore, over time, the viscosity of the adhesive increases due to the inherent characteristics of the colloid.

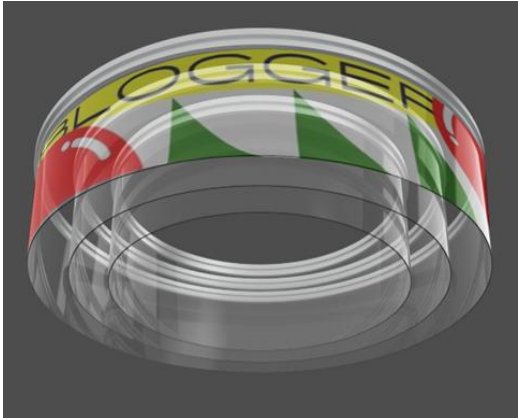




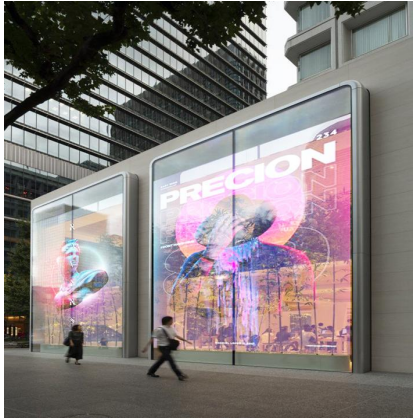
# Application Scenario



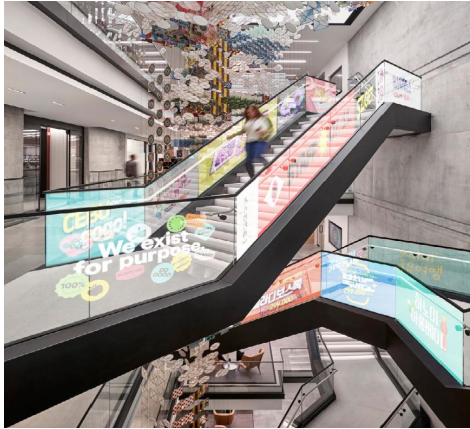
Handrail elevator



Glass guardrail



Retail Store



Glass curtain wall etc.



